



# Pendle View Medical Centre

**Summer Newsletter**



## Patient Participation Group

We are planning to introduce our first Patient Participation Group. The purpose of the group is to improve communication between practice staff and patients and to shape change within the practice.

Would you be interested in finding out more about the practice and making a positive contribution to the services offered? We are looking for patients who are representative of all the practice population to join the group. Our first meeting will be held on Tuesday 18th October 2011 at 6.30pm.



If you are interested please speak to the Practice Manager for more information.

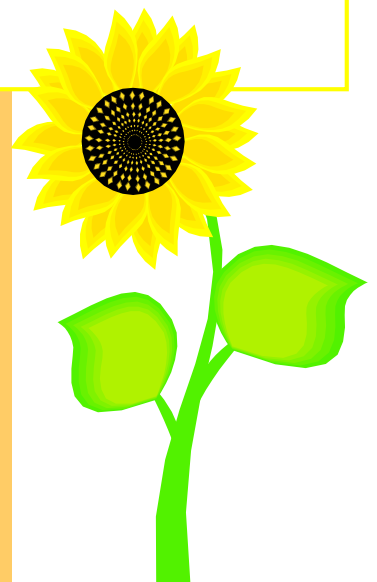
### Important Notices

#### Extended Opening Hours

The practice will no longer be providing extended opening hours on Thursday mornings. On Thursday we will open from 8.15am and not 7.15am. We will continue to offer extended hours every Wednesday evening 6.30-8pm.

#### Practice Closure

We will be closed Monday 29th August 2011 for Bank Holiday



## STAFF NEWS

Dr Ganguly is our new GP registrar and he will be starting with us on Wednesday 5th August for 12 months. He is a fully qualified doctor with 5 years hospital experience and is now in his final 12 months of training before becoming a fully qualified GP.

Dr Newell is our new Foundation Year 2 doctor and she will start on Wednesday 5th August for 4 months. FY2 doctors are fully qualified doctors with 1-2 years of hospital training. All doctors in their 2nd year after qualification have to spend 4 months in general practice.

Congratulations to Lisa Collins our practice pharmacist on the birth of her twin boys Samuel and Thomas.



### NUMBER OF PATIENTS WHO FAILED TO ATTEND APPOINTMENTS DURING THE MONTHS OF APRIL TO JUNE

274

#### Appointments with the doctors

157 appointments were missed with the doctors. This equates to over 26 hours of doctors' time that could have gone to someone else.

#### Appointment with the practice nurse and health care assistant

117 appointments were missed with the Practice Nurse and Health Care Assistant. This equates to over 29 hours of nursing time that could have gone to someone else.

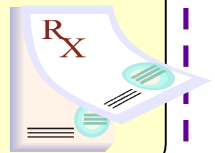
Please cancel your appointment if you cannot attend.

A new policy has been introduced in the practice. Patients who fail to attend 2 or more appointments within six months will be contacted by the practice and may be asked to find another GP.

### Did you know?

During the month of June

The receptionists processed 2069 patient prescriptions and stamped and scanned 1492 letters.



### Cardiovascular Health Checks

Health checks are now being offered to all patients between the ages of 40 and 74.

The check is to assess your risk of developing heart disease, stroke, kidney disease or diabetes. If there are any warning signs, then together we can do something about it.

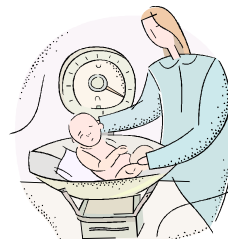
The checks take about 20-30 minutes.

If you are aged between 40 and 74 and do not currently have any of the above conditions then please ring the practice to ask about an appointment.

By taking early action, you can improve your health and prevent the onset of these conditions.

### Baby Clinic

The baby clinics are held on Tuesday mornings 10-11.30 am. The clinic is no longer a drop in session and is by appointment. If you wish to drop in to see the health visitor you can still visit the Family Tree Centre for advice.



### PENDLE VIEW MEDICAL CENTRE RACE FOR LIFE MAY 2011

Staff at Pendle View Medical Centre ran the race for life in May to raise money for breast cancer research.

WELL DONE!!